

MPS Catalog Number:

S1 90 80 042 MA AL 027

Date:

01/24/2014

END FITTINGS

Tower End Fitting:

Eye (Forged Steel)

Line End Fitting:

Ball (Forged Steel) (ANSI 52-5)

MATERIAL

Corona Ring (Tower):

None

Corona Ring (Line):

8" Corona Ring

Corona Rings are recommended for applications of 230 kV and above

Number of Sheds:

13 large 14 standard

Rod Diameter:

16 mm

Weight Estimate:

11.6 lbs 5.3 kg

DIMENSIONAL VALUES

Section Length (L):

54.2 in 1,377 mm

Rubber Length (X):

42.4 in 1,077 mm

Standard Shed Height (P1):

1.5 in 38 mm

Large Shed Height (P2):

2 in 51 mm

Projection Ratio (S/P):

- 1.5

Shed Spacing (S):

3 in 76 mm

Dry Arc Distance:

42.2 in 1,072 mm

Leakage Distance:

121.8 in 3,094 mm

ELECTRICAL VALUES

60 Hz Dry Flashover:

416 kV Min. Withstand: 386 kV

60 Hz Wet Flashover:

374 kV Min. Withstand: 325 kV

Pos. Critical Impulse Flashover:

716 kV Min. Withstand: 620 kV

Neg. Critical Impulse Flashover:

761 kV Min. Withstand: 666 kV

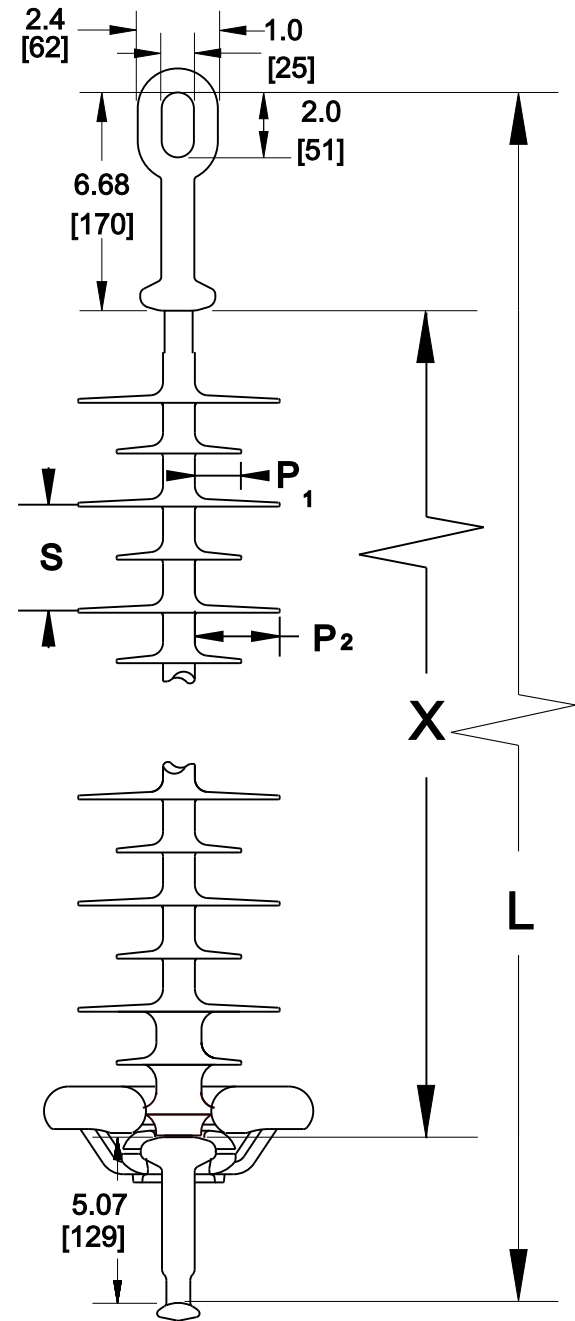
MECHANICAL VALUES

Specified Mech. Load (SML):

25,000 lbs 111.2 kN

Routine Test Load (RTL):

12,500 lbs 55.6 kN



This drawing contains confidential information that is property of MacLean Power L.L.C ('MacLean'). Use of MacLean's confidential information without MacLean's express written consent is strictly prohibited and may expose you to legal liability. If you believe that you received this material in error, please destroy it or return it to 'MacLean Power, L.L.C., 7801 Park Place Rd, York, SC, 29745, USA.'

Dimensions: inches [millimeters]

Note: Drawing not actual depiction of insulator appearance

Silicone Rubber Sheath & Sheds
Complies with applicable ANSI and IEC standards.